



THE PERISCOPE PROJECT

PERINATAL SPECIALTY CONSULT PSYCHIATRY EXTENSION

This toolkit was produced by the Medical College of Wisconsin and is provided to health care providers through The Periscope Project. The goal of this toolkit is to provide practitioners with an up-to-date, reliable, and easy to use source of information for mental health conditions during the perinatal period. The content is based on the latest available evidence-based guidelines and research whenever possible. If you are aware of new guidelines or research or if you have suggestions that can help improve this toolkit, please contact ThePeriscopeProject@mcw.edu. Please read our disclaimer before using our toolkit.

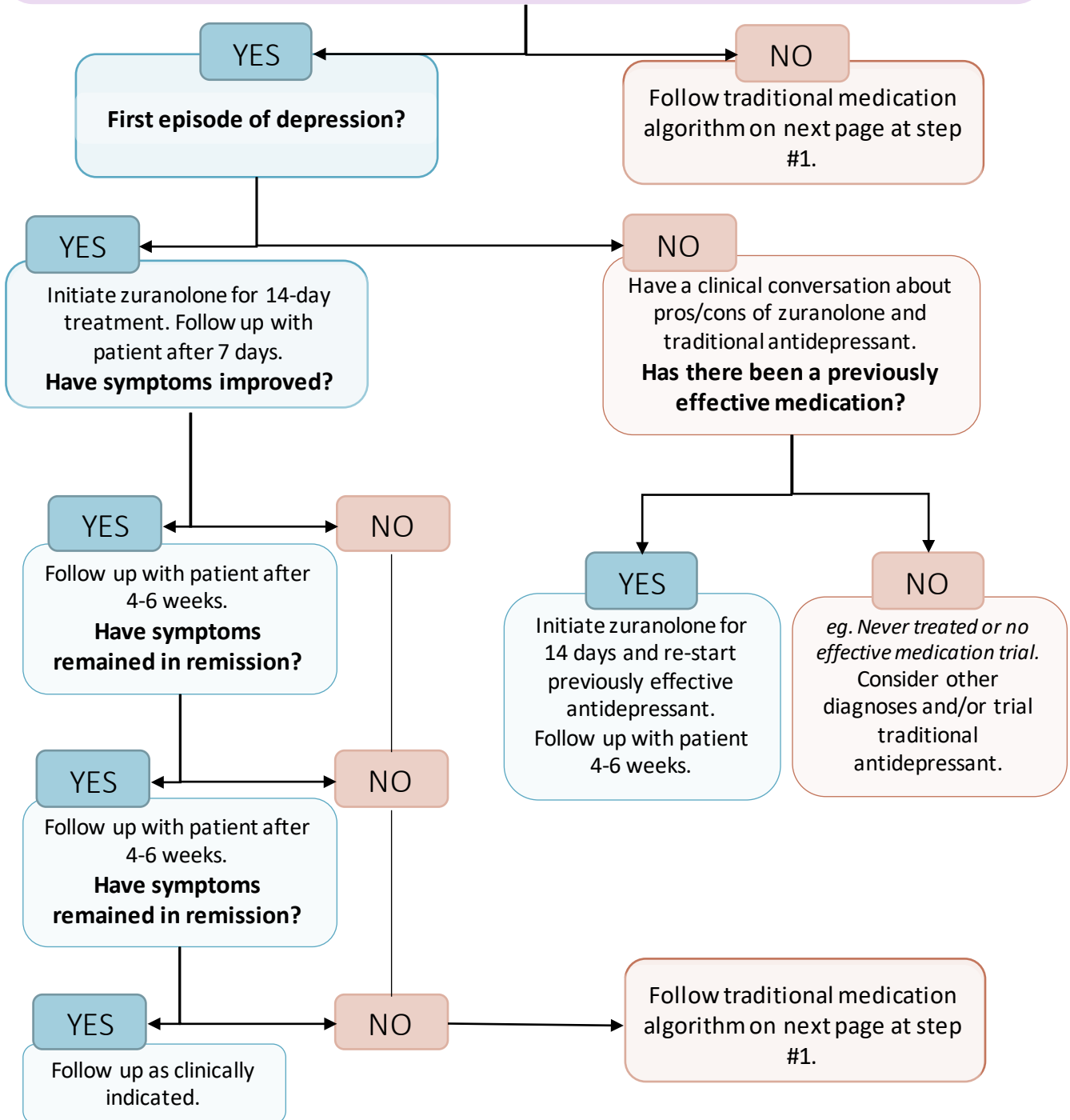
This toolkit is for educational purposes only and does not constitute medical advice. The toolkit is not a replacement for careful medical judgments by qualified medical personnel. There may be information in the toolkit that does not apply to or may be inappropriate for the medical situation at hand.

MEDICATION DECISION TREE FOR POSTPARTUM DEPRESSION

Complete **Depression Screen** (PHQ-9 or EPDS) +/- and ask **single Bipolar Screen question**.

**(1) Patient screens positive for depression AND negative for bipolar question
AND**

(2) Symptom onset was after delivery within 8 weeks postpartum



At any point contact Periscope with questions.